

RIKKYO ECHO



VOL. 35 no. 2

St. PAUL's UNIVERSITY

DECEMBER 1980

Does Rikkyo Make No Appeal To The Public?

— the preface —

In recent years when the competition in the entrance examination system was becoming very acute, some universities were boasting that their competitive rate was higher than that of any other university. On the contrary, however, far from rising, the competitive rate of a certain department of Rikkyo University has become greatly depressed. Why is it that our university, which once caused a sensation in the world by providing entrance examinations for adult students in its law faculty and the B-Essay-Type entrance examination in its literature faculty, should not enjoy greater popularity among applicants? Whether this may be ascribed to lusterless impression that it makes upon the world or to its peculiar examination system, it is a serious matter for us that Rikkyo should not make appeal to the public. Be that as it may, we, the staff of Rikkyo Echo, intend that in this issue Rikkyo's lack of appeal shall be thoroughly evaluated from every aspect.



We went to *Eishin Preparatory School*, east of Ikebukuro Station, to interview the directors. The following is the summary of our dialogue;

Q: Frankly speaking, how do you feel about the number of candidates to Rikkyo and their quality?

A: Directly speaking, both are gradually becoming lower and lower. Although there is a unique system of entrance examination like the B-examination in the Faculty of Literature which is received with delight by candidates, there are many problems—about entrance examination, they are the designation to World History as a required subject in the Faculty of Literature and the scantiness of elective subjects in the Faculty of Law. The candidates also shun Rikkyo because of the increase of the successful candidates who are admitted by the system of admitting students in the Faculty of Literature and Law. As the female students increase, the quality of the students becomes bad. Those are the reasons why the number of candidates of Rikkyo has decreased.

Q: It is often said that the students of Rikkyo University are lacking in their love for their school. Do you think it is connected with the problems of the entrance examination?

A: No, I don't think so. I suppose it is caused by the lack of the appeal of Rikkyo University. For example, alumni of Rikkyo don't play an important part in society, and they are deprived of them by those who graduated from other universities—such as Aoyama, Waseda, Sophia. Or, the spirits of school's foundation and its characteristics are disappearing now. There are no appeal that directly express what Rikkyo is. About the employment, it is true that the quality is good but there are few who enter the foremost companies, which discourages the candidates from choosing Rikkyo.

The essential points of this problem are not always due to the system of entrance examination. But the fact is that the real competitive numbers are surely declining (see diagram), and there are severe eyes (especially candidates' eyes) on Rikkyo University. We should not escape from these eyes, but establish an honorable educational institution.

Then we will need to examine some essential factors which cause the lack of the appeal of Rikkyo University.

ON EXAM

We often hear that the appeal of Rikkyo University is decreasing recently, and we can produce evidence that candidates for examination are decreasing in number in recent years.

First, we'll examine it concretely in figures;

Secondly, we consider the system of the entrance examination. Is there any problem in it?

(real competitive number)

Facul.	49	50	51	52	53	54	55
Lit.	8.4	8.2	5.8	5.9	4.8	5.7	5.6
Law	7.2	9.6	7.2	8.9	7.0	8.9	6.8
Econ.	7.6	9.3	9.6	5.9	7.6	7.7	5.1
Sociol.	7.6	9.9	8.3	9.8	7.5	8.1	6.0
Sci.	8.7	9.1	8.9	8.1	6.2	5.5	4.2

SEASON

コーヒー&ハンバーガー

喫茶

Phone: 985-1795

ものすごく安いうえに

紹介無料サービス!! 学生割引!! あり

●一度当店でコンタクトをおつくりください。それ以後、新しいお客様をお連れいただくと、あなたにレンズを差しあげます。

ソフト&ハードレンズ

東京コンタクトレンズ

高田馬場店 209-4646

池袋店 985-4646

渋谷店 409-0005

新宿店 348-4646

THE IMAGE OF RIKKYO



How do the students live their everyday life, in particular, their university life? And what is the meaning of "University" to us? Perhaps, almost every student has found a different meaning from other students.

Anyway, our way of life has an important effect on the image of Rikkyo University.

We had a questionnaire as to the student life in St. Paul's Univ. Questioned were 100 St. Paul's Univ. students.

Q.1: On what occasion do you realize the importance of your student life?

A.1: friendship 43
club activities 31
lectures 18
others 8

Q.2: On that occasion, how much do you feel the importance?

A.2: considerably 55
a little 38
not so much 5
little 2

Q.3: To what extent does your university life occupy your daily life?

A.3: to a great extent 55
to a rather great extent 33
to a rather small extent 9

Q.4: What is the main thing you do afterschool?

A.4: club activities 56
association with friends 22
study 11
part time job 11

Q.5: Are you satisfied with the faculty or the branch of learning which you attend?

A.5: Yes. 70
(completely 32, rather 38)
No. 30
(not so much 21, not at all 9)

Q.6: Then, what is the cause of your satisfaction or dissatisfaction?

A.6: the contents of lectures 54
students 25
professors 11
others 10

Q.7: On what occasion do you find yourself as a St. Paul's Univ. student?

A.7: at club activities 36
while cheering the St. Paul's baseball team 12
at lectures 12
at other times 17

Q.8: Then, how much do you realize your identity on the occasion?

A.8: a little 43
considerably 32
not so much 16
little 9

Q.9: Are you conscious that St. Paul's Univ. is a mission school?

A.9: No. 61
(not at all 26, not particularly 35)
Yes. 39 (a little 26, very 13)

A questionnaire about the image of Rikkyo University. (Questions to 100 students of other universities.)

Q.1: What do you imagine first when you think of Rikkyo University?

A.1: Christianity 13
Red bricks 9
Shigeo Nagashima 8
Girl students 7

Q.2: Which color do you think is suited for the imagine of Rikkyo Uni-

versity?

A.2: Brick red 17
Blue 15
Green 4
White 9

Q.3: Which animal do Rikkyo University students resemble?

A.3: Dog 15
Cat 6
Giraffe 3

Q.4: Do you think that Rikkyo University students industrious?

A.4: Industrious 5
Some what industrious 34
Ordinary 45
Some what negligent 13
Negligent 3

Q.5: To what extent do you have a high opinion of Rikkyo University?

A.5: to a considerable extent 44
to a certain extent 40
to a small extent 12
almost nothing 4

The most unexpected result we could get is that almost 60% of Rikkyo University students are hardly conscious that they are studying in a mission school, while a lot of out-side students imagine something connected with "Christianity" on hearing "Rikkyo University".

And the most remarkable result is, (though we could have expected it to a degree beforehand), that more than 50% of Rikkyo University students spend their after-school hours on club activities. And, moreover, one third of the answers have shown their self-consciousness of being a "Rikkyo University student" in club activities.

It is often said that the rate of club-activity participants in Rikkyo is much higher than that of other universities. So they are all the more familiar to each

field of mass communication, lectures in other fields are not sufficiently open. This is due to the fact that professors specialize in a one-sided field—mass communication. Fourth, students in any department want more effective practical English classes because English ability will be needed in works after graduation, etc.

Now in short, the lectures which are given by the school authorities may satisfy us without the problems we've ever complained of. It is the mental attitude of students that makes them vivid. At least we must attend the lectures every time, but moreover we should correct our negative attitude toward them. If we participate in the lectures with our own critical mind, they will be more valuable than before.

other. This might be the chief reason they leave a favourable impression on out-side people.

On the other hand, students of Rikkyo University are sometimes said to have no ambition, and to our regret, we cannot help acknowledging it.

But, University students' "lack of ambition" is considered as the inevitable outcome of the "examination hell", which is getting harder year after year.

Therefore, "school colour" has disappeared, and there cannot be found any difference from many other universities. That is to say, the lack of ambition can be regarded as a general phenomenon at every university in Japan.

But it is also true that Students of Rikkyo University feel bad about it. Their deep desire to devote themselves to something and to have close friends while in university, seems to be reflected in the result above.

On the Academic Color of Rikkyo

We have thus far researched into Rikkyo's appeal to the public from four standpoints as you have seen in the preceding articles: its entrance examination, its lectures, the impression that it makes upon the public, and the employment of its graduates. By way of a next attempt, we decided to visit personally the student office managing the whole of St. Paul's University to ask for their views on the main theme of this current issue.

Q: "What is the aim of the literature department's designation of world history as a required subject for its entrance examination, ? And what influence has it exerted upon the Literature Department's appeal to the public?"

A: "The truth is that the faculty decided to designate world history as a required subject in view of the fact that a synthesized way of thinking based upon world history is necessary for the applicants for admission to the literature department of Rikkyo. But to our regret, we must confess that this limitation has eventually led to a gradual decrease in the number of examinees for the literature department."

Q: "For what purpose does our university have the recommendation-entrance-system?"

A: "In one word, it is in order to admit students with various potentials other than those with some technical knowledge who only aim at being successful in entrance exams."

ON THE LECTURE



First of all, we students should reflect on our own attitude toward the lectures. Generally speaking, it seems that there are two types of students: One is the student who always attends the lectures that he takes, and the other is the one who doesn't. Many students of the former type take an honest attitude toward the lectures, but it can hardly be said to be positive. While a lot of professors are eager to give solid lectures, the realization of their desire depends on the attitude of the students.

As we know, almost all the departments adopt the two ways to lecture: by seminar, and in the auditorium. Many students seem to be content with this system. But some courses in the department of literature don't have so-called seminars. Though many classes which consist of a few members are open, a seminar has a different meaning

from them. A seminar is essential for the students who want to study on one particular theme seriously and deeply.

When we think about the content of lectures, we can find some problems. The following are examples. First, in the department of economics, students can hardly study modern economics. This is incomprehensive, for in Japan modern economics and Marxian economics gain ground equally in the present stage. Second, students majoring in French or German literature find it hard to make long-range plans through years for their studies. To put it in the concrete, one girl student said that last year she planned to take a certain lecture the following year, but she couldn't find it in the curricula then. The lack in the numbers of teachers may cause this problem. Third, in the department of sociology, except for the

Coffee

ピザハウス **オリオン**

(週2回以上アルバイト受付中)

ランチタイム・セットあります

東池袋1-13-10 60階通り

TEL 985-9869

美味求真

東明飯店

池袋西口センタービル3・4階
電話 985-7316

中国料理のご宴会は
おまかせ下さい。

個室座敷 5~100名様
ホール 5~100名様

美容室
ポンパドール
東京都豊島区池袋2丁目1063番地
〒171 TEL 03(986)6732



TEL 982-0368

Healthy-fashion
We love St. Paul's Gals
LADY'S SHOP
PARCO B.1

SUGIYA

パブレストラン **バイカル**
11:00 AM ~ 2:00 AM
オールド・ロバート 1500円
パーティ・コンパ御引受致します
☎ 985-6756
サンシャインシティ・アルパ3F

MY CAMPUS, MY SHOP

立教学院事業部

豊島区西池袋5-10-5

TEL (985) 2768~9

Q: "Some Rikkyo students seem discontented with the lack of professors and the massproduced education. Would you mind expressing your feelings about this situation?"

A: "As you know, there is not a large number of students in our university. I suppose Rikkyo University has comparatively fewer students per professor than other private universities in Japan. I fear that the problem of the mass-produced education, which most of the present private universities in Japan are confronted with, cannot be readily solved for the time being."

Q: "Our university is said to have once famous for its excellence in the study of foreign languages. But this good reputation is being lost in the eyes of the public, isn't it?"

A: "Yes, that is surely true. It cannot be denied that some professors of Rikkyo complain of the decline of their

student's mastery of foreign languages. In my opinion this is the main reason why Rikkyo does not make as much of an appeal to the public as before."

Q: "Our statistics show that only four percent of Rikkyo students are really conscious that their university is a mission school. What do you think of this?"

A: "The religious elements of St. Paul's University, which belong to the Anglican Church, make it a principle not to demonstrate their Christianity so obviously as others. This is why it is unavoidable to some extent that students should not be so conscious of the Christian aspects of their own school. We wish that your four year's campus life at Rikkyo University is of some help in rooting in you the christian spirit on which Rikkyo's education is founded, in whatever form you choose we embody it in your philosophy afterwards."

The editorial staff members of Rikkyo Echo, visited a seminar of the English and American literature course to have an interview with Prof. Maekawa, who is well known for his strictness with his students.

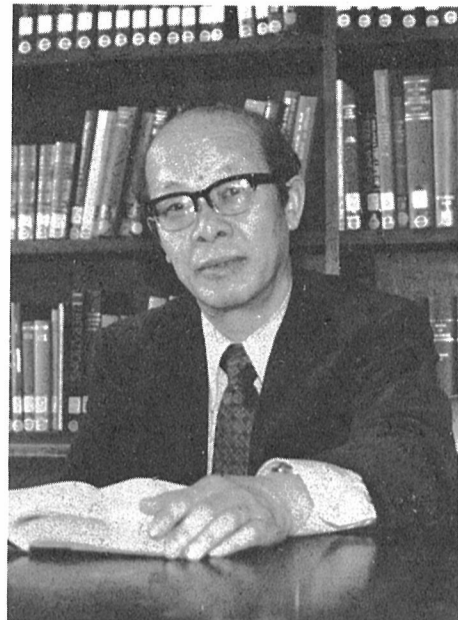
Q: "Could you tell us what the purpose is of the B-Essay-Type entrance examination?"

A: "One purpose that I'd like to mention to you is that it is to resist, say, the deviation-value-suprematism of contemporary educational circles. And another is in order to admit those applicants to this university who have really put heart and soul into club activities rather than studies for entrance examinations in their senior high school days. I think it is such students who have led a student-like life in the true sense of the word."

Q: "Certainly, we understand you. Well then, what do you require of current Rikkyo students?"

A: "Ever since I first came to Rikkyo University I've felt that Rikkyo is a wonderful university having a lot of good students. So I love Rikkyo heartily. But to my regret, some Rikkyo students have a inferiority complex toward other universities because both the deviation value and the employment rate of Rikkyo are inferior to those of other universities. What I'd like to call upon all of you to do is to take more pride in being students of Rikkyo University instead of having an inferiority complex. It is no use being swayed by such outside influences. If you were possessed by such an unimportant complex all through your lives, what a pity it would be! If you have time to worry about such a trivial thing you would be better employed spending the time in doing your utmost. I believe Rikkyo University is sure and reward you for your efforts."

Echo: "Thank you so much for your thoughtful opinions. We are all going to try and do our best as you've suggested."



Prof. Maekawa, who has been serving as a professor of English literature at Rikkyo University for several years, is now a senior member of the English and American literature course. We are told that such is his strictness in his research and instruction that some of his students nickname him "Demoniac Maekawa".



珈琲 専科 らくだ

9:00~12:00
モーニングタイム

11:00~13:00
ランチタイム

(THE EPISODE)

While having an interview with Prof. Maekawa, we felt that his every tone showed how deeply he loved Rikkyo University. What a lucky school Rikkyo is that it should have such a fine professor as he! His remark, "Take more pride in being a student of Rikkyo University," which he emphasized so much has impressed all of us, editorial staff members to the bottom of our hearts.

On the Employment of Rikkyo Graduates

Chief Employment Officer: Taro Nakamura



The first factor is that the people who come from the high schools related with Rikkyo University (e.g. Rikkyo high school St. Marguerite's school etc.) are taking an active, conspicuous part in the actual world and they are estimated highly.

The second factor is that we refuse a system of admitting students into Rikkyo University on the basis of the commendations for the athletic clubs. Because of this, we haven't been able to expect that many Rikkyo athletes can be chosen as players on All Japan teams. But on the other hand, it has excluded the students who can only take part in and has brought about the unique student group.

The third factor is that the International Students Exchange Program and other systems are established. These are special systems which aren't adopted by other private universities very much. In regard to the International Students Exchange Program, it is beneficial for us to expand our international vision.

By the way, we hear that the identity of Rikkyo has been lost and there aren't any pure "Rikkyo boys and Rikkyo girls" recently. But it does not mean the loss of love for our university, but that there are multiple needs in this modern age which develop a variety of students.

I think the appeal of the students of Rikkyo University is their intelligence and it has existed in us as a universal virtue.

Finally, what I want to say is that you musn't waste two chances when you can get the tickets for Heaven. To put it concretely, the first one is the life after leaving Rikkyo and the second one is the life after you retire. In other words I want you to make efforts in order to make a better life.

Though we hear that the level of the entrance examination for Rikkyo University has come down in recent years, it is still on a high level and character of the students itself is excellent.

As you know, Rikkyo University is the oldest christian university in Japan established 107 years ago. The charm of Rikkyo is the attractive talent developed in its originality that the enterprises demand from the students of Rikkyo and at the same time the tolerance which has been cultivated, because it is established by the Anglican Church.

By the way, seeing the data that shows the percentage of graduates who could enter thirty high-ranking enterprises which are popular among the students of the literary department, it says: Rikkyo-3%, Keio-11%, Jochi-6% and most of other private universities-0%. This data shows the level of Rikkyo University on employment is ranked as A class among all of the private universities.

In its background, we can find the existence of a unique student group of its own.

THE CONCLUSION

All the above is the outcome of our research into Rikkyo's appeal to the public from all its aspects. It has doubtless made you aware that Saint Paul's University can never afford to flatter itself that it has the most attractive assets of its high deviation value and employment rate. But what we, members of the editorial staff, all request of you is that you consider whether the statistical figures, if ever so accurate and persuasive, can be charged off to a university's appeal to the public with a capital A at all. Both the deviation value and the employment rate vary on no small scale as a result of public circumstances. If such inconsistent things are to delude you into having an inferiority complex when compared with other university,

that is pure folly. In the entrance examination for public persons that throws open the door to adult education and the B-Essay-Type entrance examination of the literature department as opposed to, as it were, the "deviation-value-suprematism" of the public, can we not find Rikkyo's efforts to convert itself, from 'a spurious university for matriculation and employment', to 'a genuine university for investigation of truth'? In conclusion, all we, of the editorial staff, should like to end by suggesting that we Rikkyo students should also make no less earnest endeavors to cultivate ourselves through four years' university life than Rikkyo does to improve its educational system at all times.

コーヒーラウンジ

セソハウス ☎ 988-5516

立教OBの店 パーティー承ります
サンシャイン通り

家庭的で安くておいしい 早い

名物メンチカツ定食 ¥ 330

まんぷく食堂

立教通り 吉野屋トナリ
TEL 982-7072

麻雀

北 南

すなが

西池袋3-23-6
TEL(985)3406

ティータイム(2:00~5:00) ¥450
(チーズケーキorクレープにドリンク付)

■クラス会・コンパ2000円より出来ます

池袋東口 **ピザハウスピノ**

見つめよう、確かな世界。

BIBLOS

BOOKSELLERS & IMPORTERS

ピブロス

TEL 200-4531

国電高田馬場駅前 E.Lビル4F

Let's chat at CHAT

コーヒーを飲みながら…
外人講師と
おしゃべりが楽しめます。

高田馬場駅1分(ビックボックス隣り)
PM 5:00~9:00 月~土 ☎03-200-7082
新宿区高田馬場1-28-6 清光ハイム307
(カモンカマークのビル)

英会話サロン チャット

Two Young Pop Stars Now In Spot

—The interviews with two gals in the show business—

AYA KATSURAGI



An actress who appears on T.V., Miss Aya Katsuragi is seen for example in "Tonda Cupple", "Zenigata Heiji", "Geragera 45 fun", etc. It is three years since she made her debut in show business, but she is as unspoiled as if she were a new actress. Here, we have an interview with Miss Aya Katsuragi.

Q: How did you come to enter show business?

A: I applied for an audition on "Mu Ichizoku" and was selected from amongst thirty thousand people.

Q: What type is your ideal man?

A: My ideal man is a person who is healthy and does all things as energetically as he can and eats everything I cook.

Q: What are your favorite foods?

A: Ice cream, misoshiru, soup, etc.

Q: What is your hobby?

A: Dancing.

Q: What do you do on holidays?

A: Go shopping or sleep.

Q: Who is your rival?

A: Well, my rival is Miss Kayoko Kishimoto.

Q: When did you fall in love for the first time?

A: When I was the seventh grade, I loved a senior of the basketball club. I sent chocolates to him by express delivery on St. Valentine's day.

Q: How do you feel when you see yourself on T.V.?

A: (In a low voice) Seeing unsatisfactory scenes, I feel gloomy. I am also feeling gloomy today.

Q: Do you feel a gulf between on actress and an ordinary girl?

A: Yes. For example, when I enter a café, I'm stared at. I don't feel comfortable, but it can't be helped.

Q: Is your job—in short, acting—pleasant?

A: Yes. I live a full life.

Q: What type of actress do you want to be in future.

A: Well, I want to be an actress like Keiko Takeshita.

Q: Please take good care of yourself. Thank you very much.

Miss Aya Katsuragi is more beautiful and interesting than we imagined. We had a very good time with her.

A: Well, Tomoko Ishizuka and Yoshie Kashiwabara.

Q: What type is your ideal man?

A: My ideal man is broad-minded, very kind and very interesting.

Q: What is your hobby?

A: My hobbies are making dolls and listening to music. I am not good at sports, but I'm fond of playing badminton.

Q: What are your favorite foods?

A: Okonomiyaki, takoyaki, curry and rice, spaghetti, etc.

Q: Will you continue this career all your life?

A: I have not decided that yet, but I do think about marriage.

Q: Well, please tell us about your future plans.

A: I'll study singing more and more. I want to be a singer who is liked by everybody.

Q: We hope for your good health. And we'll cheer you! Thank you very much.

Naoko Kawai is a cheerful and nice girl. We were favorably impressed by her. By the way, "The First Concert Live" will be released Dec. 10.

Cross-word Puzzle

Fill in the blanks and write the letters in order from A to M. It will make up a single word. Make use of the following hints.

1		11			H					17
	2									
3			K							
		I	E							
			4						16	
				5	12					
6		L						15		18
	7					13	14		F	
8		B			C					D
			9					G		
10		A								M
	J									

Across

- the group of stars containing the North Star, the Ursa Minor.
- luminous band of countless stars encircling the heavens. the Gaiaxy
- small planet that revolves around a larger planet.
- person who shoots with bow and arrows, sagittarius.
- largest planet of the solar system.
- the polestar, formerly used as a guide by sailors.
- containing the seven bright stars forming the plough.
- a new star fading back into the original luminosity after having radiated violently.
- the Southern Cross.
- any of the bright points seen in the sky at night.

Down

- the planet nearest the earth, some people think it is inhibited.
- snake, big snake.
- a small lively animal with horns, they are storerger, less timid, and more active than sheep.
- the sixth moon orbiting Saturn.
- the sixth planet of the solar system.
- motor-car with a meter for recording the fare.
- the male of beef cattle.
- the second planet of the solar system, a very beautiful woman.
- a horse with wings, the steed of the Muses.
- a system for ascertaining direction and range of a aircraft
- the group of stars near the equator of the heavens, the group of stars containing Sirius.

NAOKO KAWAI



Recently many hopeful young singers appeared in show business. One of them is Naoko Kawai. She is very pretty and sings very well. Her popularity is now on the rise.

Here, we have an interview with Miss Naoko Kawai.

Q: How did you come to enter show business?

A: I succeeded in an audition to choose a brother and sister of Hideki Saijo. I had wanted to be a singer since I was a junior high school student.

Q: Did your parents oppose you?

A: Yes. But they knew that I was fond of singing, and I was able to overcome these opposition somehow or other. (laughter)

Q: What are the good things about show business?

A: I can see and meet many people. But I just can't believe I have really entered show business yet.

Q: How do you feel when you sing a song?

A: I get nervous! I take care to sing to the very best of my ability.

Q: Who are your friends in show business?

ジュージュ焼いて
皆んなで楽しく……



じんぎすかんのてっばん焼
エリート

忘年会新年会各パーティー
400名様

ロサ会館 5F
988-8411

パーティー、コンパ等に
当店を御利用下さい。
御一人様2,000円より

AM 10:00~PM 6:00
ティタイム 定食あり
PM 6:00~AM 5:00
パブタイム

飲んで歌えて食事もできる。



happy hall
TEL. 988-9591

喫茶 **衛門emon**

西口日本勧業角丸証券地下1階
TEL. 985-4328

MUSIC ALL DAY

AD SUMMERS
coffee and eats

池袋駅西口
立教大学タッカーホール前

RIKKYO ECHO

Published twice a year by the English Press Society of Rikkyo University

Faculty Advisors:

Mr. F. Ediger, Mr. H. Stobbe, Mr. K. Macdonald

Student Staff:

A. Takada
T. Hachimura, M. Sakamoto, H. Kojima, N. Kubo
H. Narumi, M. Ikoma, Y. Shigematsu, H. Aso,
K. Tojo, S. Shiroki, K. Ota, T. Tamaki, S. Uryu,
A. Inoue, F. Matsumoto, H. Izaki, K. Horiguchi
I. Kaseda, K. Sugahara, K. Takeuchi, H. Nagahama,
K. Narita, M. Ishiyama, M. Ono T Y ama kawa

Office: THE RIKKYO ECHO of Rikkyo University,
3-chome, Nishi-Ikebukuro, Toshima-ku, Tokyo.

Tel: (985) 2684

スポーツニッポン ドライビングスクール

運転免許

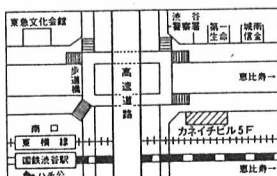
実地免除

20年の歴史と5万人の信頼

《宿泊教習17日間完全指導!!》



- 教習は……..
親切な小グループシステム。
- 宿泊は……..
豪華なマンションでゆったりくつろぎながら明るく快適な生活。(30K・冷暖房完備)
- 食事は……..
新築レストランでバラエティーに富んだ食事。



主催 **スポーツニッポン新聞社**
事務局 **宿泊教習センター**

お申し込み・お問い合わせは
400-6453(代)
渋谷区渋谷 3-18-2 カネイビル 5F